

005541

RECEIVED  
LARAMIE COUNTY  
CHEYENNE, WY.

CERTIFIED LAND CORNER RECORDATION

DESCRIPTION OF CORNER EVIDENCE FOUND, AND ORIGINAL RECORD (If known)

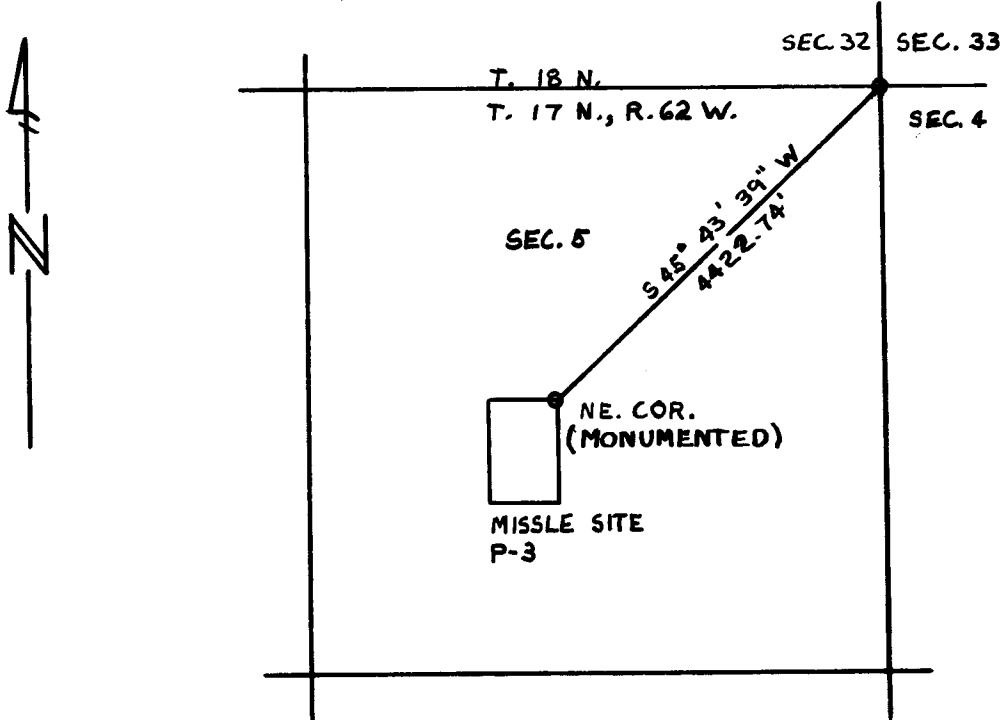
~~86 FEB 21 PM 3 43~~

At the corner of sections 4, 5, 32, and 33, T.17N., R.62W., 6th P.M., Laramie County, Wyoming, found the original monument, a granite stone, 15 x 13 x 7", loosely set and plainly marked.

DESCRIPTION OF MONUMENT AND ACCESSORIES ESTABLISHED TO PERPETUATE THE ORIGINAL LOCATION OF THIS CORNER:

Set a 1" rebar 0.5' South of the original corner. From the corner, the NE corner of Missile Site (P-3) bears S.45°43'39"W., 4422.74 feet distant.

SKETCH, WITH COURSE AND DISTANCE TO ADJACENT CORNER IF DETERMINED IN THIS SURVEY. (May Sketch or Paste Reproduction on Reverse Side.)



Bearings determined by Solar Observation

I, Jeffrey D. Youngquist certify that I have carefully performed or reviewed the work done on the diagrammed corner as reported on this recordation form and approve the same.

*Jeffrey D. Youngquist*  
Signature of Surveyor  
RLS. 3515  
Registration No.

STATE OF WYOMING,  
Office of Clerk and Recorder,  
County of Laramie

This "corner record" was filed for record on the 21 day of Feb, 1986, was noted on the cross-index plat and is assigned page No. \_\_\_\_\_, in book No. \_\_\_\_\_.

*Janet C. Whitehead*  
County Official

Cross Index No. _____	T. _____	R. _____	Mer. _____
_____	T. _____	R. _____	Mer. _____
_____	T. _____	R. _____	Mer. _____
_____	T. _____	R. _____	Mer. _____
_____	T. _____	R. _____	Mer. _____
_____	T. _____	R. _____	Mer. _____
_____	T. _____	R. _____	Mer. _____